



LOT 9


Residence 2C

Approx. 4,250 Sq. Ft.
Farmhouse



PRELIMINARY • ARTIST'S CONCEPT

PONDEROSA
HOMES

Ponderosa Homes reserves the right, at its sole discretion, to make changes or modifications to floor plans, features, specifications, exterior color schemes, policies, guidelines, literature, materials, homesites released and plans designated on each homesite without notice or obligation. Porches, windows, garages and courtyards (if available) may vary in size and configuration per plan and elevation. Square footages are approximate. Ponderosa Homes is a licensed California real estate broker, CA DRE license #01257567. 

WoodsideDanville.com



LOT 9

Residence 2C

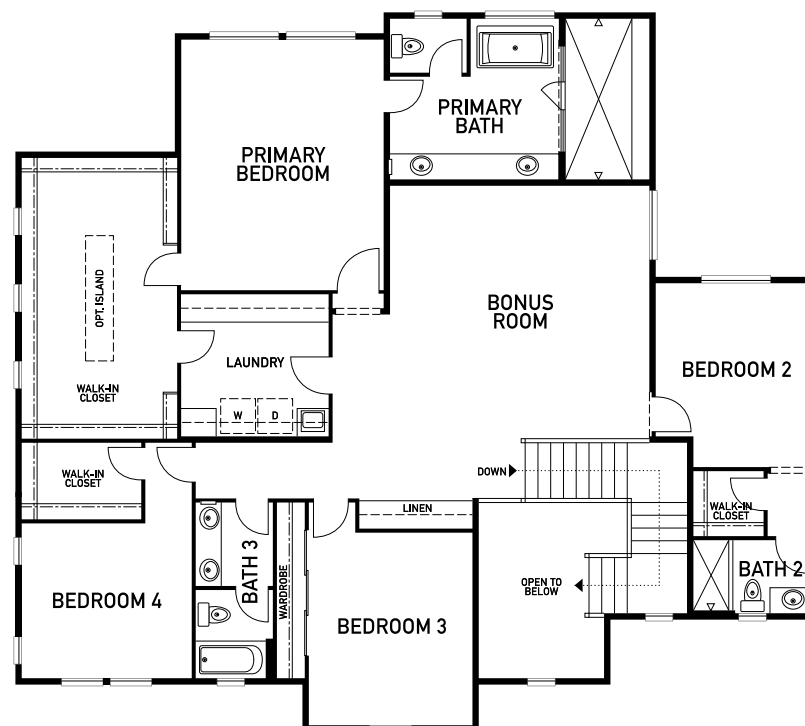
Approx. 4,250 Sq. Ft.
Farmhouse



WOODSIDE
— ESTATES —



FIRST FLOOR



SECOND FLOOR

PRELIMINARY • ARTIST'S CONCEPT



LOT 9

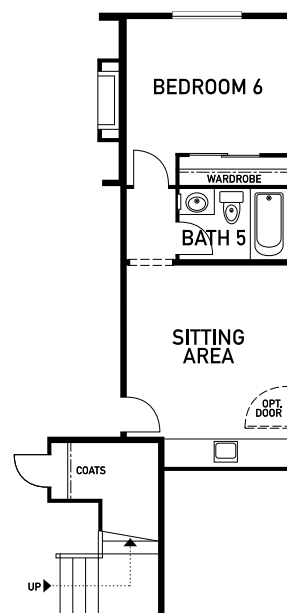
Residence 2C

Approx. 4,250 Sq. Ft.

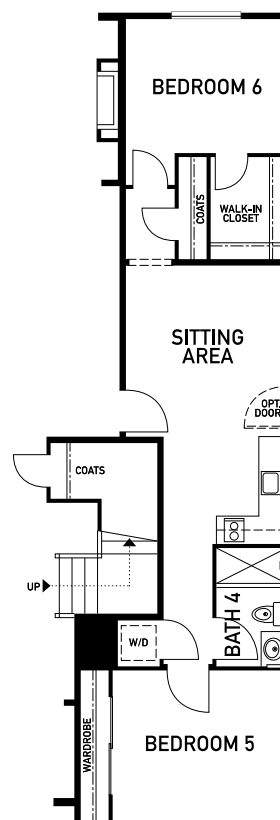
Farmhouse



WOODSIDE
— ESTATES —




OPTIONAL
SUITE 1



OPTIONAL
SUITE 2

PRELIMINARY • ARTIST'S CONCEPT

PONDEROSA
H O M E S

Ponderosa Homes reserves the right, at its sole discretion, to make changes or modifications to floor plans, features, specifications, exterior color schemes, policies, guidelines, literature, materials, homesites released and plans designated on each homesite without notice or obligation. Porches, windows, garages and courtyards (if available) may vary in size and configuration per plan and elevation. Square footages are approximate. Ponderosa Homes is a licensed California real estate broker, CA DRE license #01257567. 

WoodsideDanville.com