



LOT 1

# Residence 2C


Approx. 4,250 Sq. Ft.

Farmhouse



PRELIMINARY • ARTIST'S CONCEPT

**PONDEROSA**  
HOMES

Ponderosa Homes reserves the right, at its sole discretion, to make changes or modifications to floor plans, features, specifications, exterior color schemes, policies, guidelines, literature, materials, homesites released and plans designated on each homesite without notice or obligation. Porches, windows, garages and courtyards (if available) may vary in size and configuration per plan and elevation. Square footages are approximate. Ponderosa Homes is a licensed California real estate broker, CA DRE license #01257567. 

**WoodsideDanville.com**





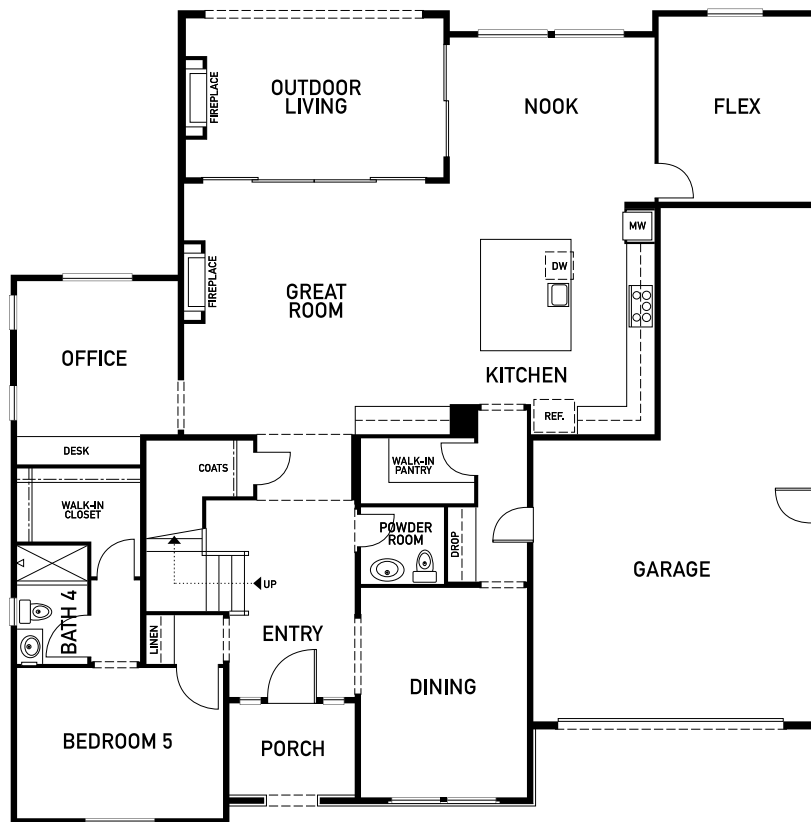
LOT 1

# Residence 2C

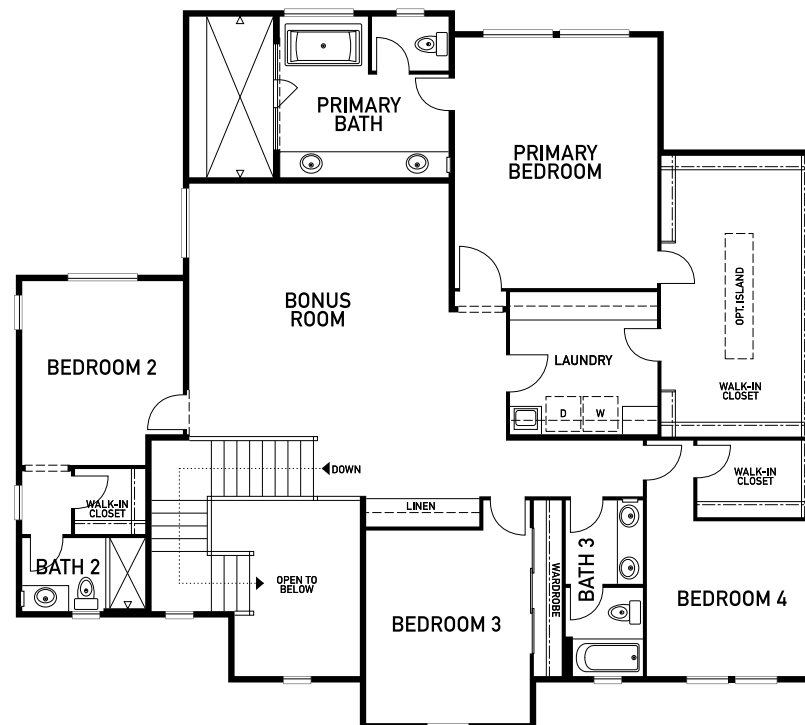
Approx. 4,250 Sq. Ft.  
Farmhouse



WOODSIDE  
— ESTATES —



FIRST FLOOR



SECOND FLOOR

PRELIMINARY • ARTIST'S CONCEPT