



LOT 7


Residence 2B

Approx. 4,250 Sq. Ft.
Prairie



PRELIMINARY • ARTIST'S CONCEPT

PONDEROSA
HOMES

Ponderosa Homes reserves the right, at its sole discretion, to make changes or modifications to floor plans, features, specifications, exterior color schemes, policies, guidelines, literature, materials, homesites released and plans designated on each homesite without notice or obligation. Porches, windows, garages and courtyards (if available) may vary in size and configuration per plan and elevation. Square footages are approximate. Ponderosa Homes is a licensed California real estate broker, CA DRE license #01257567. 

WoodsideDanville.com

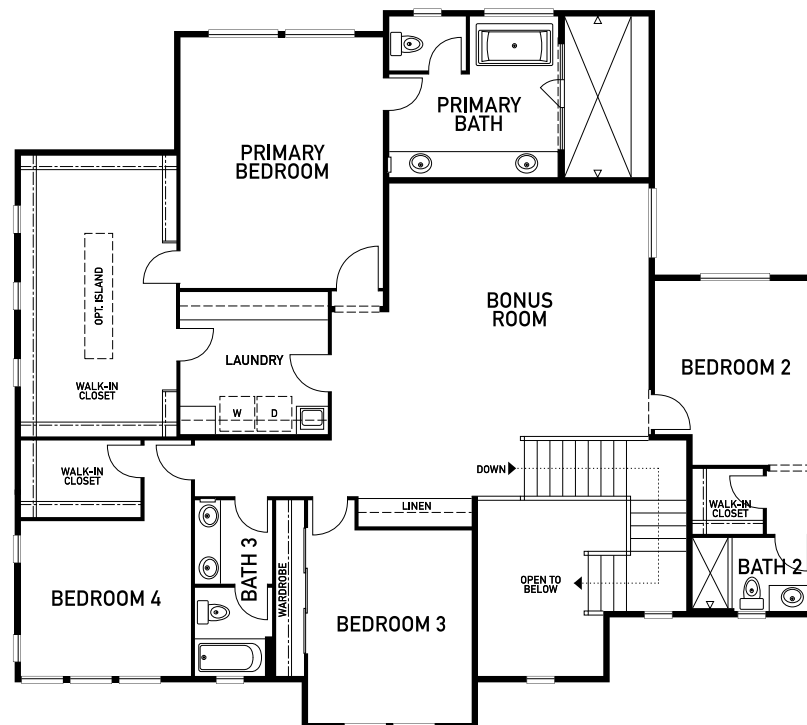
LOT 7

Residence 2B

Approx. 4,250 Sq. Ft.
Prairie



FIRST FLOOR



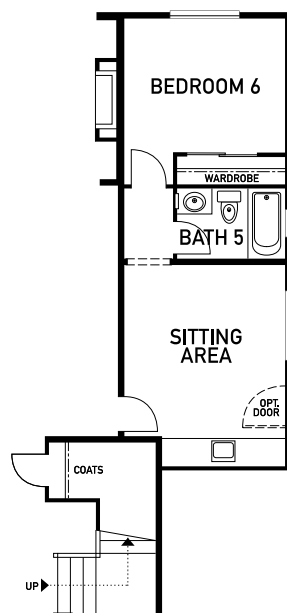
SECOND FLOOR

PRELIMINARY • ARTIST'S CONCEPT

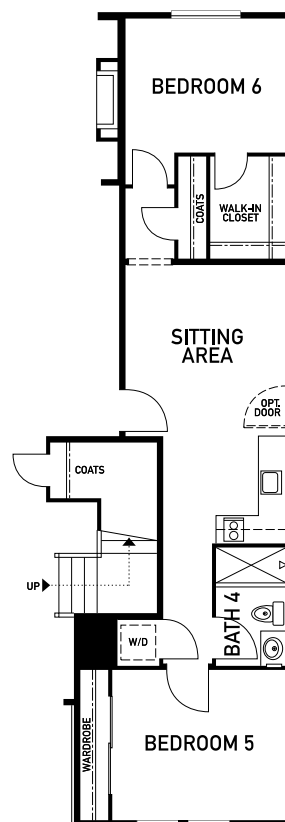
LOT 7

Residence 2B

Approx. 4,250 Sq. Ft.
Prairie



OPTIONAL
SUITE 1



OPTIONAL
SUITE 2

PRELIMINARY • ARTIST'S CONCEPT