

LOT 13

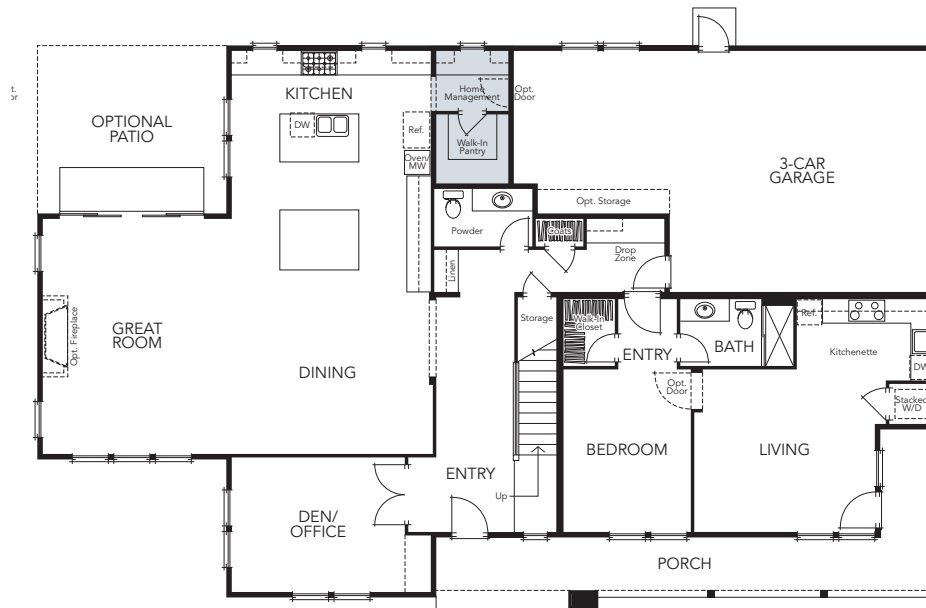
# Plan 3A

Approx. 3,648 Sq. Ft.\*  
Farmhouse

THE  
**RESERVE**

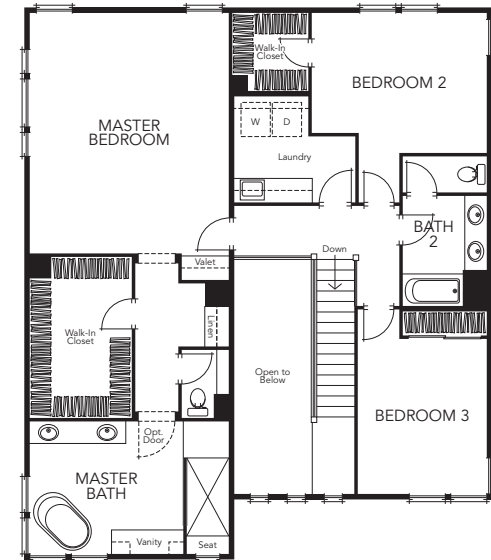


OPTIONAL  
PREP  
KITCHEN



FIRST FLOOR

\*Includes Accessory Dwelling Unit (ADU)



SECOND FLOOR

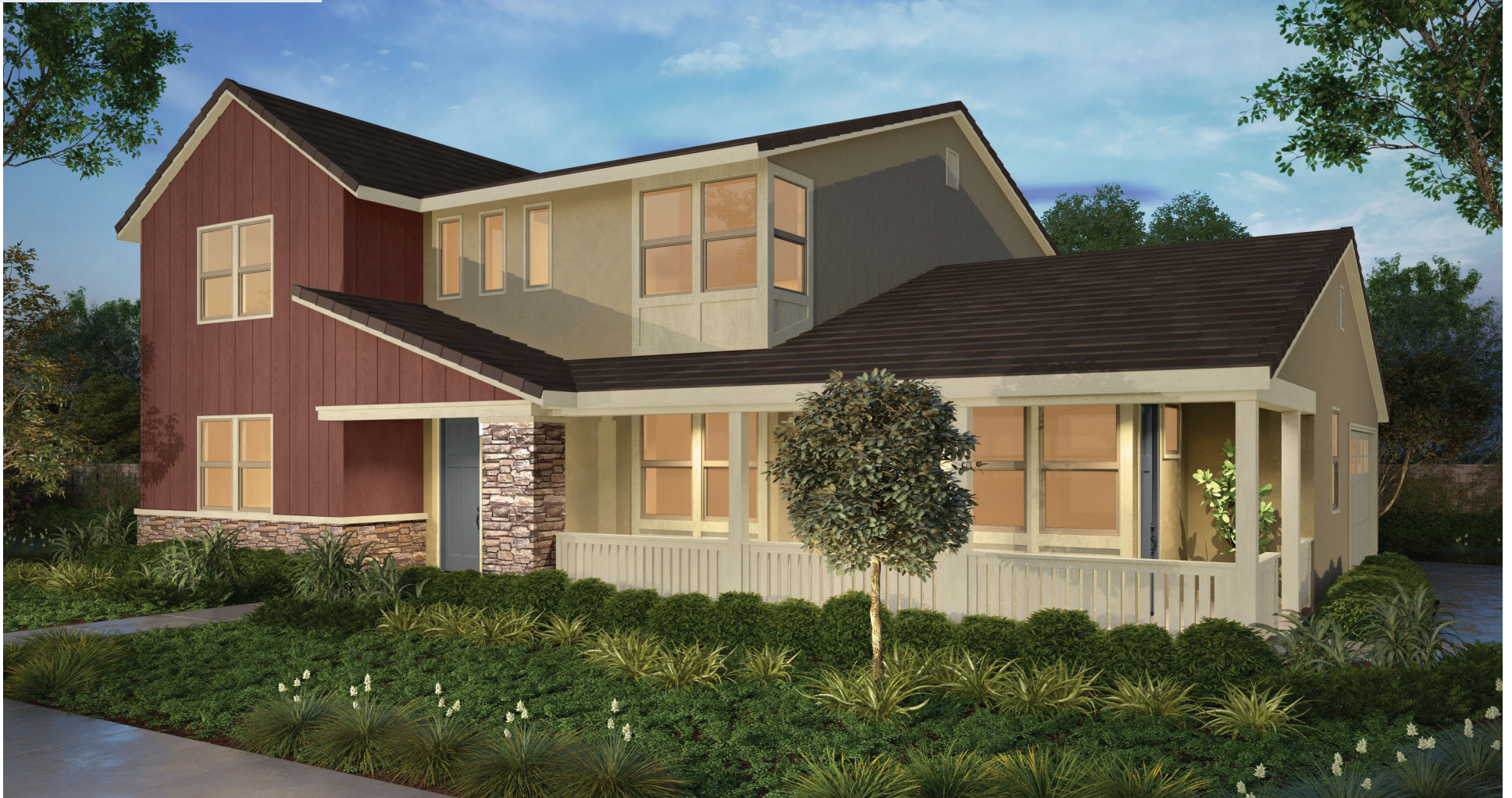
PRELIMINARY • ARTIST'S CONCEPTION

LOT 13

# Plan 3A


Approx. 3,648 Sq. Ft.  
Farmhouse

THE  
RESERVE



PRELIMINARY • ARTIST'S CONCEPTION

**PONDEROSA**  
HOMES

Ponderosa Homes reserves the right, at its sole discretion, to make changes or modifications to floor plans, features, specifications, exterior color schemes, policies, guidelines, literature, materials, homesites released and plans designated on each homesite without notice or obligation. Porches, windows, garages and courtyards (if available) may vary in size and configuration per plan and elevation. Square footages are approximate. Ponderosa Homes is a licensed California real estate broker, CA DRE license #01257567. 

[ReservePleasantHill.com](https://ReservePleasantHill.com)