



# *Red Hawk*

BY PONDEROSA HOMES

---

WELCOME  
TO  
*Red Hawk*  
BY PONDEROSA HOMES

---



*“ Home is where love resides, memories are created, friends and family belong and laughter never ends. ”*

## Home Reaches New Heights

In the heart of the San Ramon Valley, a new home community bonded by tradition and fueled by leadership awaits in Danville. It's a place where new experiences turn into new connections and life's simple pleasures turn into lifetime memories. This new collection of 20 single-family homes creates an unforgettable small-town ambience that can only exist here. With its classic allure and modern amenities, this new neighborhood is all that you've dreamed of, presenting one- and two-story home designs with spacious floor plans and desirable appointments. This is your opportunity to pick any path you want to follow. At Red Hawk, life points you in the right direction—everywhere.



# Residence One

Single-Story Home

Approx.  
3,230 Square Feet

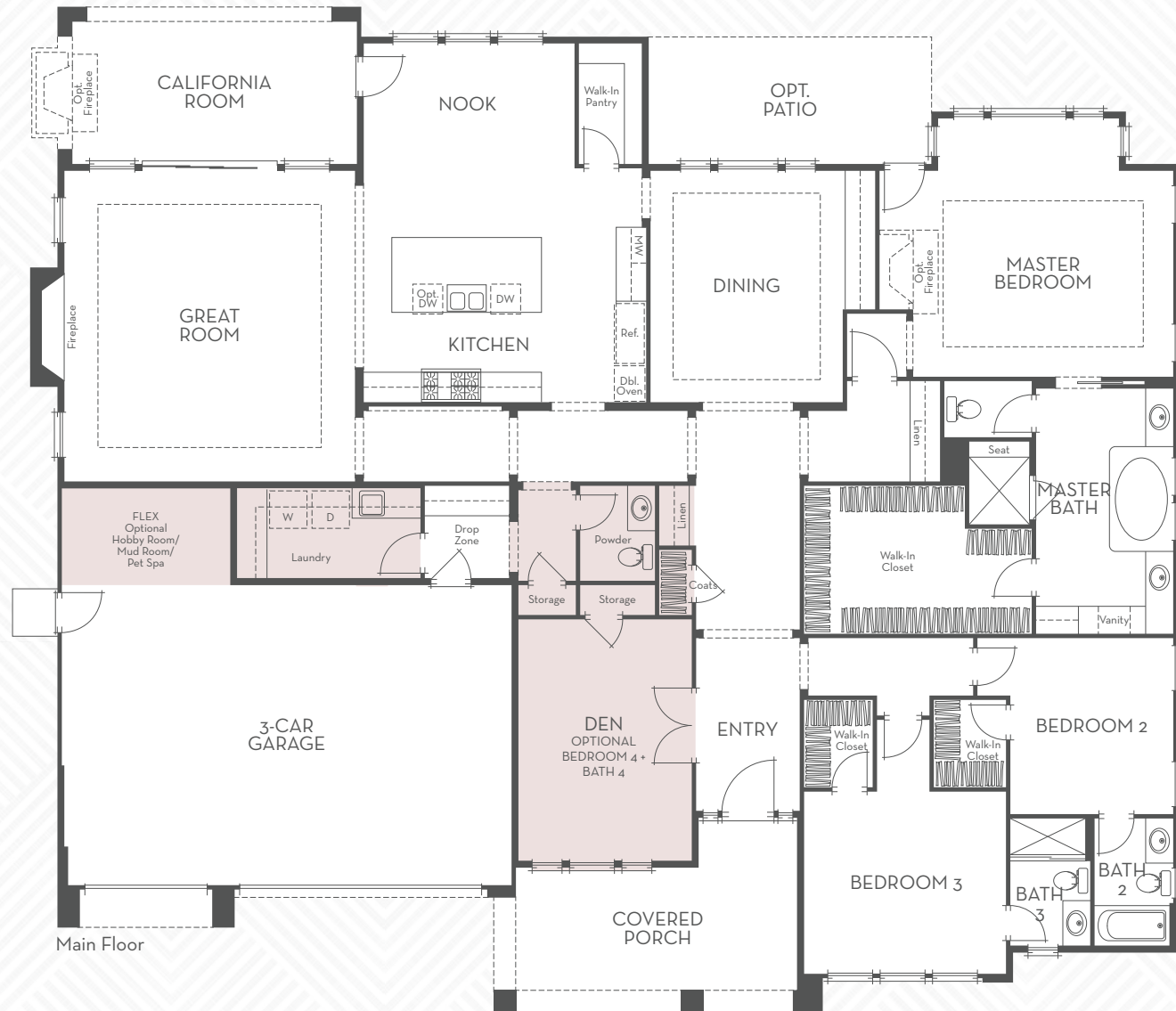
3 Bedrooms + Den

3.5 Baths

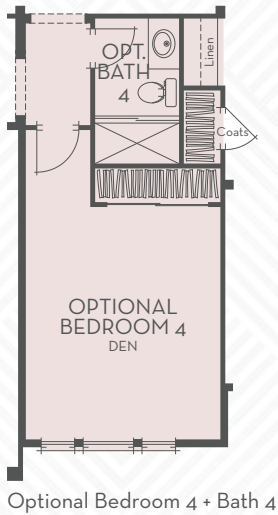
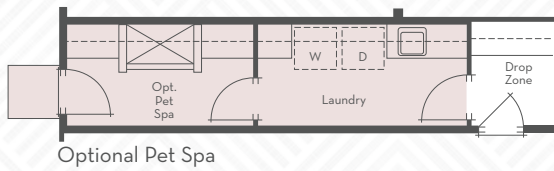
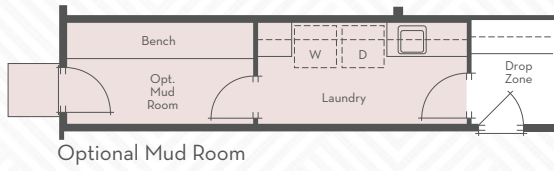
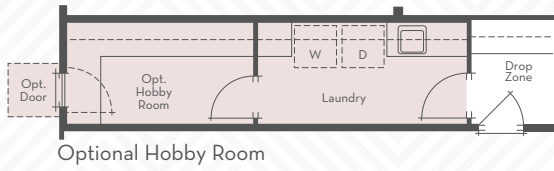
3-Car Garage

Optional  
Bedroom 4 +  
Bath 4 at  
Den + Powder

Optional  
Hobby Room/  
Mud Room/  
Pet Spa



Floor Plan Pictured Represents Elevation 1A





# Residence Two

Single-Story Home

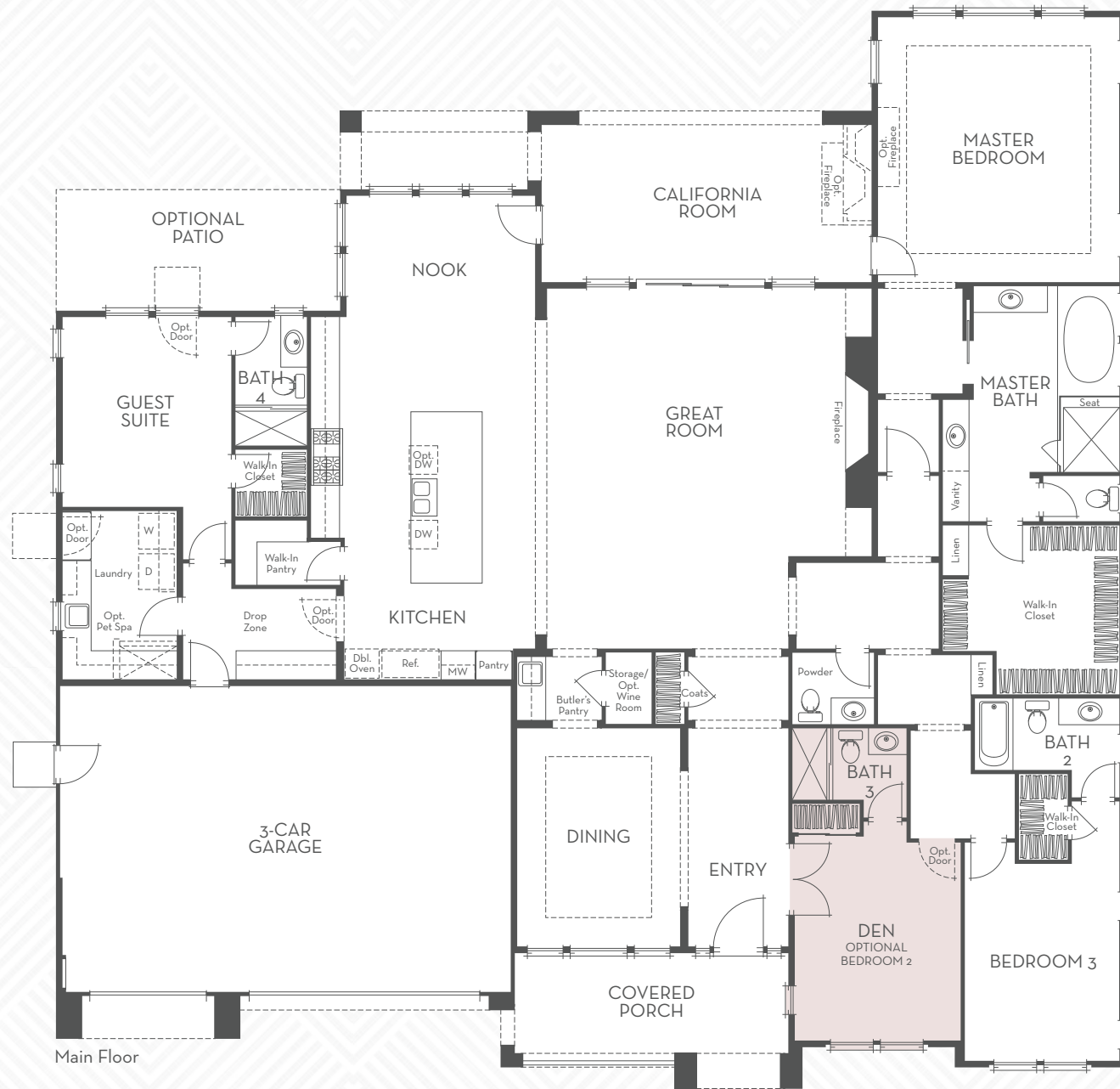
Approx.  
3,490 Square Feet

3 Bedrooms + Den

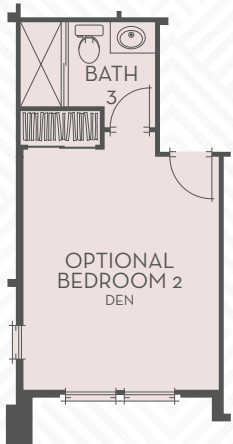
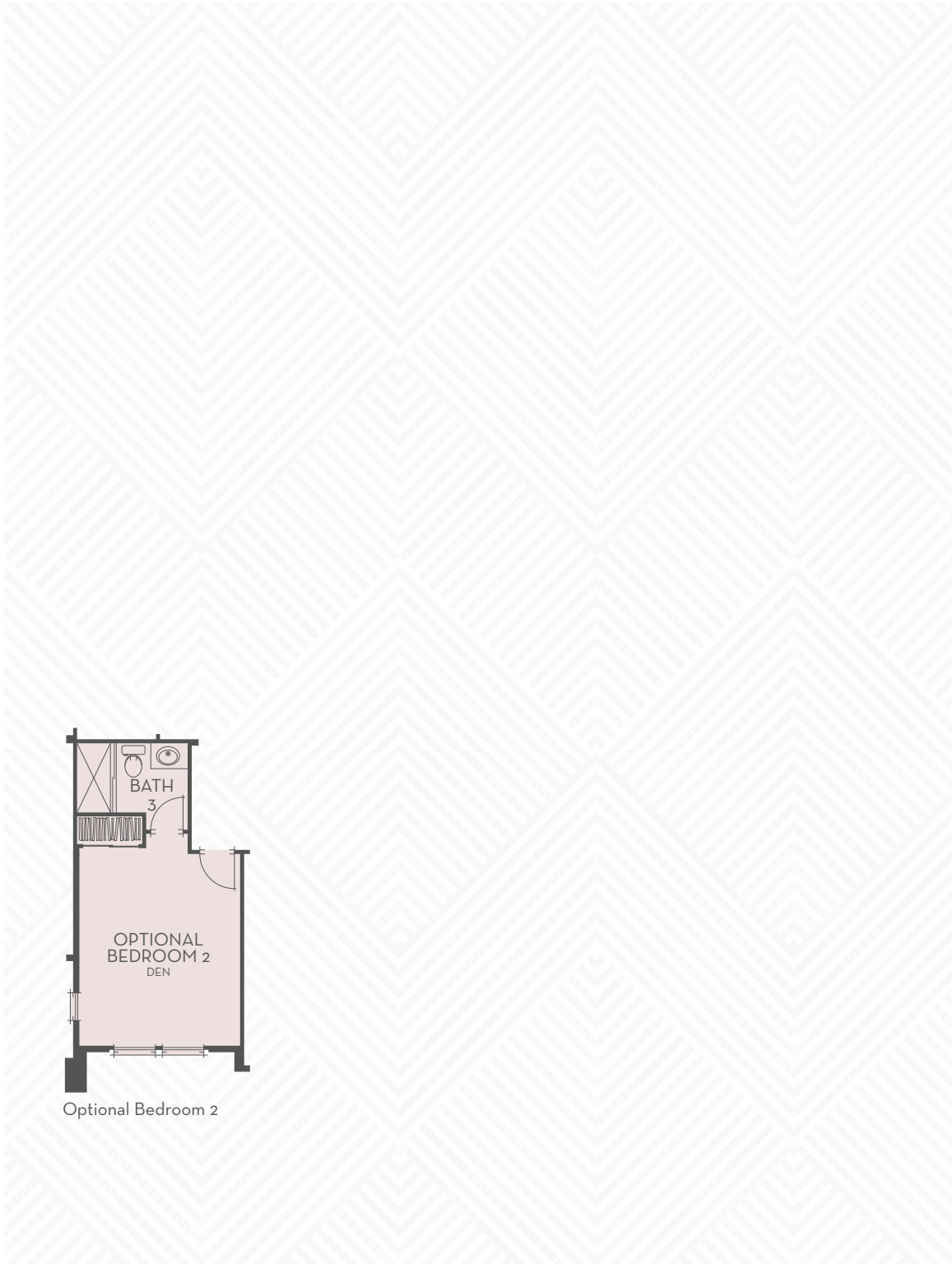
4.5 Baths

3-Car Garage

Optional  
Bedroom 2 at Den



*Floor Plan Pictured Represents Elevation 2D*



Optional Bedroom 2



Elevation 2B



Elevation 2C



Elevation 2D (Modeled)



# Residence Three

Two-Story Home

Approx. 3,989 Square Feet

4 Bedrooms + Den + Loft

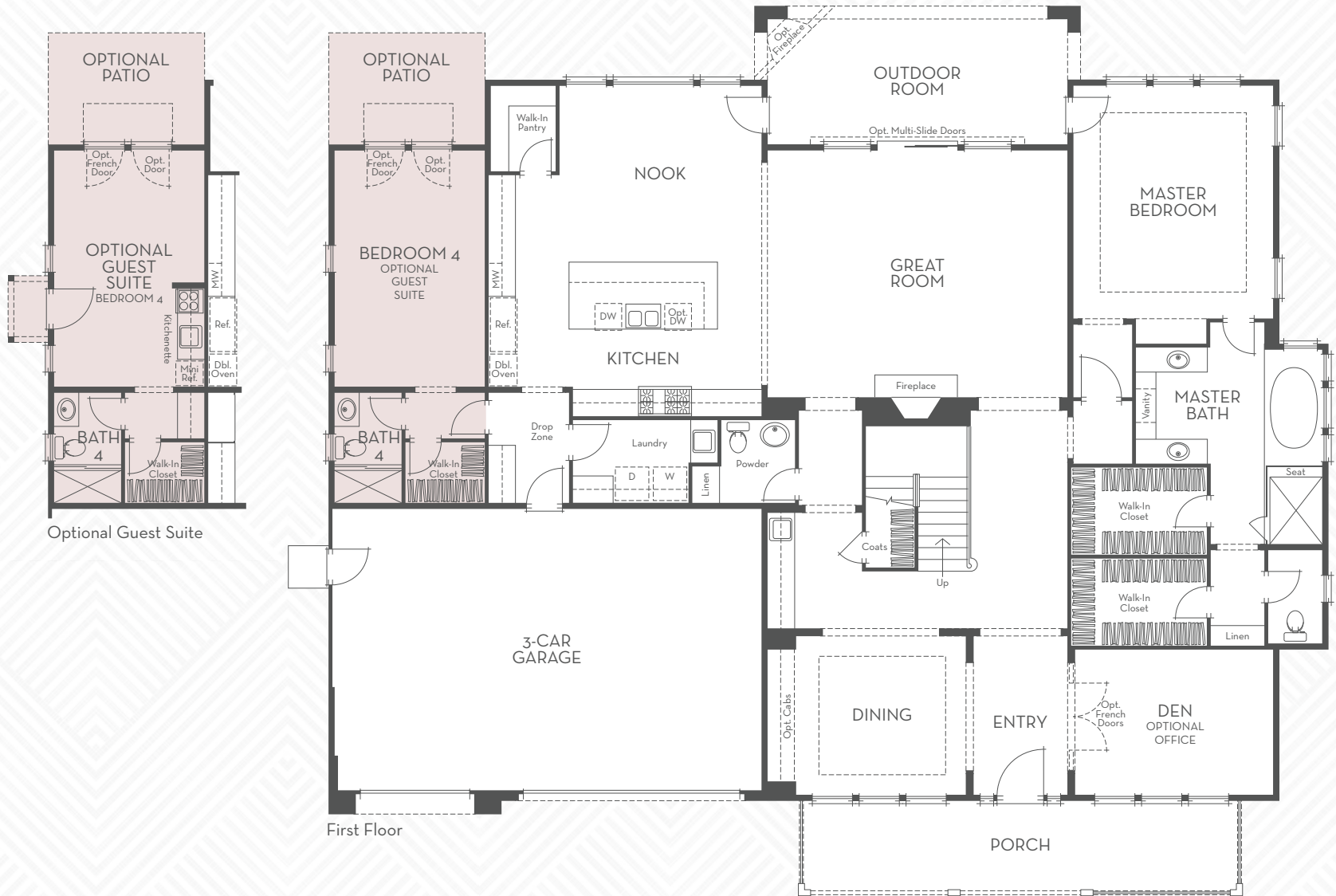
4.5 Baths

3-Car Garage

Optional Bedroom 5 at Loft

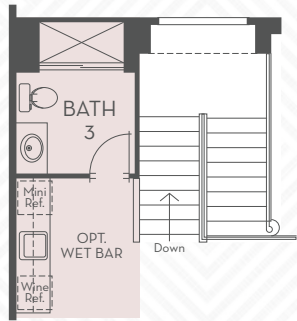
Optional Guest Suite at Bedroom 4

Optional Hobby Room/ Laundry Room 2 at Storage

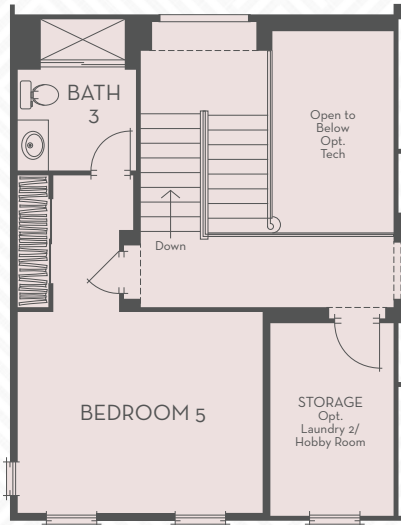


Floor Plan Pictured Represents Elevation 3C

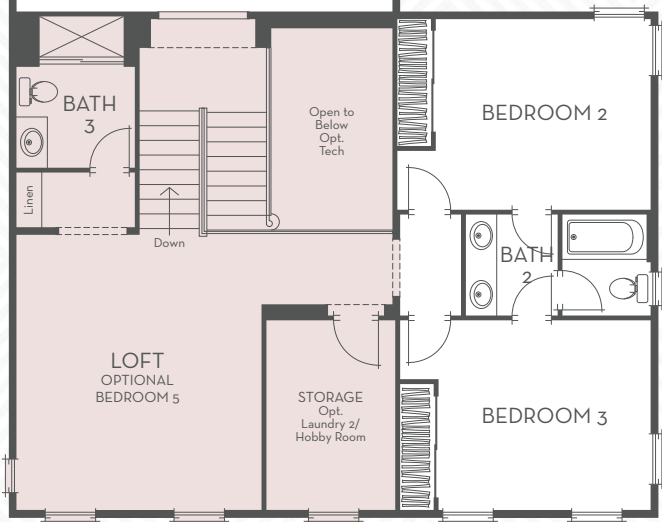
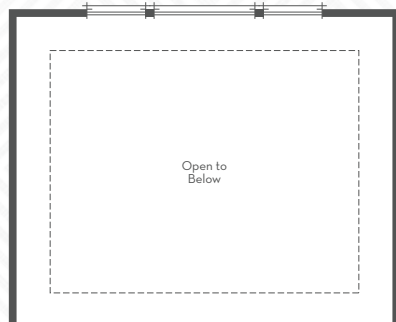




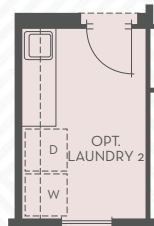
Optional Wet Bar



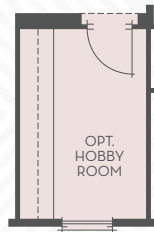
Optional Bedroom 5



Second Floor



Optional Laundry 2



Optional Hobby Room



Elevation 3B



Elevation 3C



Elevation 3D



# Residence ThreeX

- Two-Story Home

---

- Approx.  
4,540 Square Feet

---

- 5 Bedrooms +  
Den + Bonus Room

---

- 4.5 Baths

---

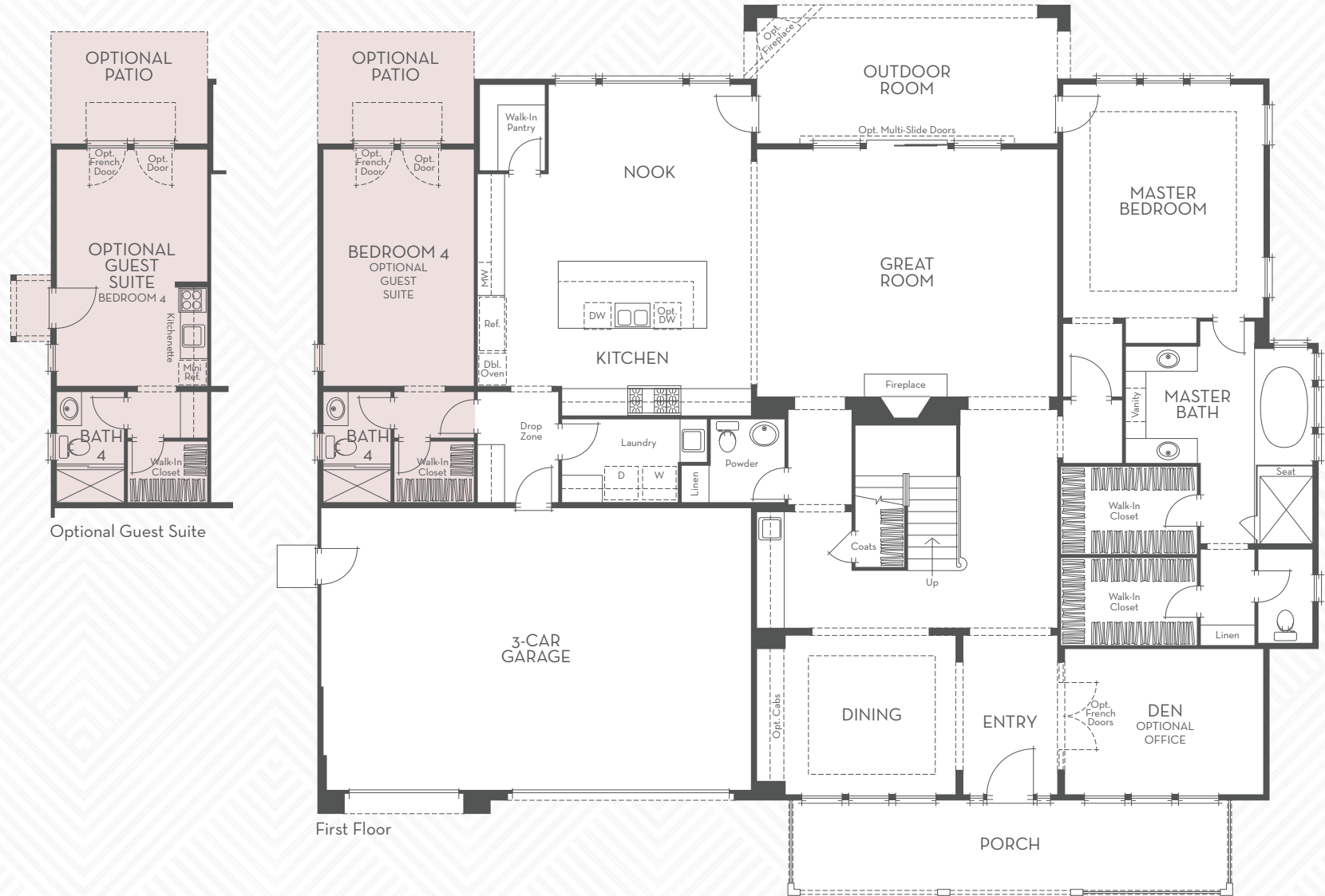
- 3-Car Garage

---

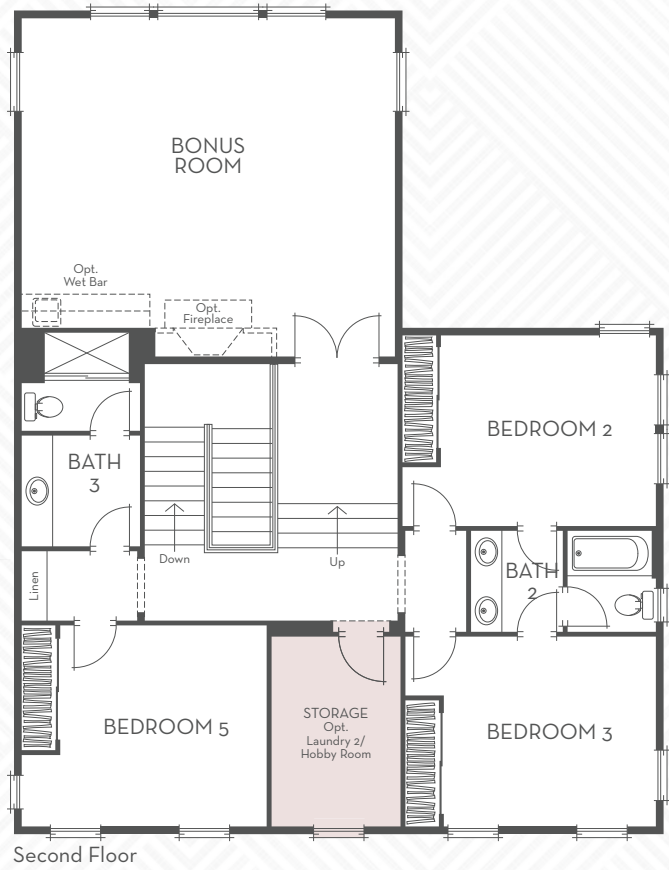
- Optional  
Guest Suite  
at Bedroom 4

---

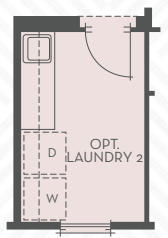
- Optional  
Hobby Room/  
Laundry 2  
at Storage



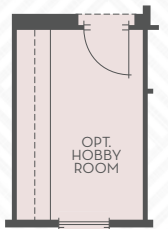
Floor Plan Pictured Represents Elevation 3XC



Second Floor



Optional Laundry 2



Optional Hobby Room



Elevation 3XB



Elevation 3XC (Modeled)



Elevation 3XD

# Features & Amenities

## A Community to Call Home

- Stunning architecture by the award-winning William Hezmalhalch Architects, Inc.
- Ideally situated on the west side of Danville, near transportation, schools, shopping, restaurants, world-class sports teams and world-renowned universities
- Two single-story floor plans and two two-story floor plans
- Walking distance to downtown Danville restaurants and shops

## Distinctive Exterior Details

- Low-maintenance stucco and/or James Hardie® exterior siding products with accents of attractive stone or brick (per residence)
- Durable, long-lasting concrete tile roofs
- Professionally landscaped front yards with weather-dependent, automatic irrigation system included
- Sectional, roll-up and insulated garage doors with automatic opener and two transmitters
- Attractive side and rear yard fencing with gate
- Belgard® paver driveway with concrete banding
- Beautiful coach lighting at garage (per residence)
- Post-tension concrete slab foundation
- Covered patio/outdoor room for entertaining (per residence)
- Stunning Andersen® French doors
- Spacious three-car garages

## Exquisite Interior Appointments

- JELD-WEN® mahogany and alder woodgrain 8' entry door with sidelights and Schlage® entry hardware in aged bronze finish
- Decorator-selected carpeting and floor covering
- Durable and stylish handset 20" x 20" ceramic tile flooring in entry, kitchen, nook, powder, laundry room, pantry and all bathrooms
- Custom radius drywall corner detailing for a contemporary touch
- Elegant dining room with sophisticated chandelier
- Warming gas fireplace
- Beautiful Masonite® two-panel, arch-top, smooth-interior doors with Schlage® lever-style door hardware in chrome finish
- Contemporary rocker-style light switches
- Kohler® plumbing fixtures in polished chrome
- Levered interior door hardware in polished chrome
- Attractive two-tone paint
- Decorative light fixture collections in beautiful finishes
- Stylish beech cabinets with maple wood interiors, raised-panel doors, dovetail drawers and soft-close feature
- Designer-selected 5 1/4" baseboards
- Incandescent stair lighting with louver faceplate (per residence)
- Distinctive cased windows

## Energy-Saving Features

- GreenPoint Rated energy-efficient home
- Photovoltaic solar electric system – solar panels 5.04 KWDC
- Tankless water heater with recirculating pump for energy-saving hot water delivery
- Central air conditioning and heating with programmable thermostat for added comfort
- Radiant barrier roof sheathing to reduce heat and keep the home cooler in hot weather
- Energy-efficient, staggered-stud exterior walls with R-23 and R-38 insulation in attic areas
- Gas stub out and 220-volt outlet for dryer in laundry room
- Efficient, low-flow showerheads and toilets throughout
- Vinyl dual-glazed windows and sliding door with Milgard® Montecito Series Low-E glass
- Eco-friendly weather stripping on all exterior doors and windows
- Quality insulation in baths, laundry and master suite to minimize sound transmission
- Dual-zone HVAC system

## Amenities for Your Convenience

- Convenient laundry room with stylish utility sink and polished chrome faucet
- Fire sprinkler system for added safety
- Quiet fans in all bathrooms, with humidity control sensors for superior ventilation
- Abundant recessed lighting to provide maximum room illumination
- Smoke and carbon monoxide detectors to meet current code
- Pre-wired with CAT-6 and RG-6 coaxial cable for telephone, data and television at pre-selected locations for added convenience
- Legrand® On-Q® structured wiring panel at garage
- 300-amp electrical service panel
- Garage interior fully drywalled, textured and painted
- Basic security system with one year of monitoring included for additional peace of mind

## Carefully Planned Kitchens

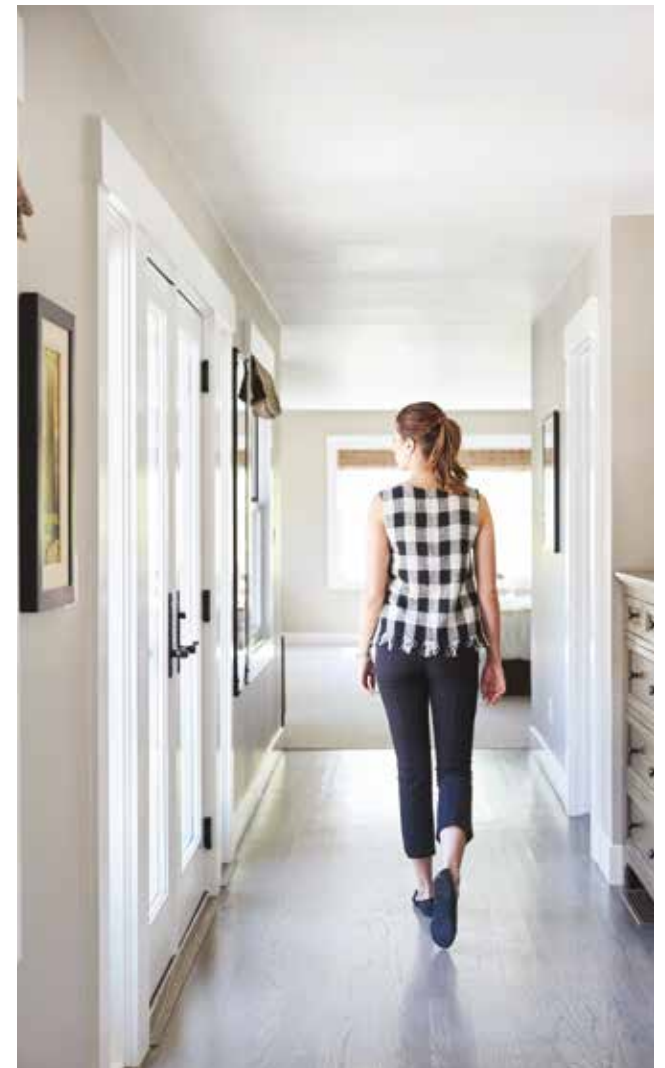
- Elegant granite-slab countertops with full backsplash
- Durable and attractive handset 20" x 20" ceramic tile flooring
- Kohler® single-bowl kitchen sink in stainless steel and Kohler® Cruette® high-arch spout with pull-out spray head in polished chrome finish
- Beautiful Precision cabinetry in beech with maple wood interiors, raised-panel doors and dovetail drawers with soft-close feature
- Stylish recessed lights and under-cabinet lighting
- Premium stainless steel appliances:
- Wolf® professional 48" rangetop with six sealed gas burners and griddle
- Wolf® professional 48" high-performance range hood
- Wolf® professional 30" convection double wall oven
- Wolf® professional 24" built-in microwave
- ASKO® 24" fully integrated dishwasher
- Sub-Zero® 48" side-by-side, stainless steel refrigerator
- Convenient walk-in pantry
- Abundant storage features

## Luxurious Master Suite

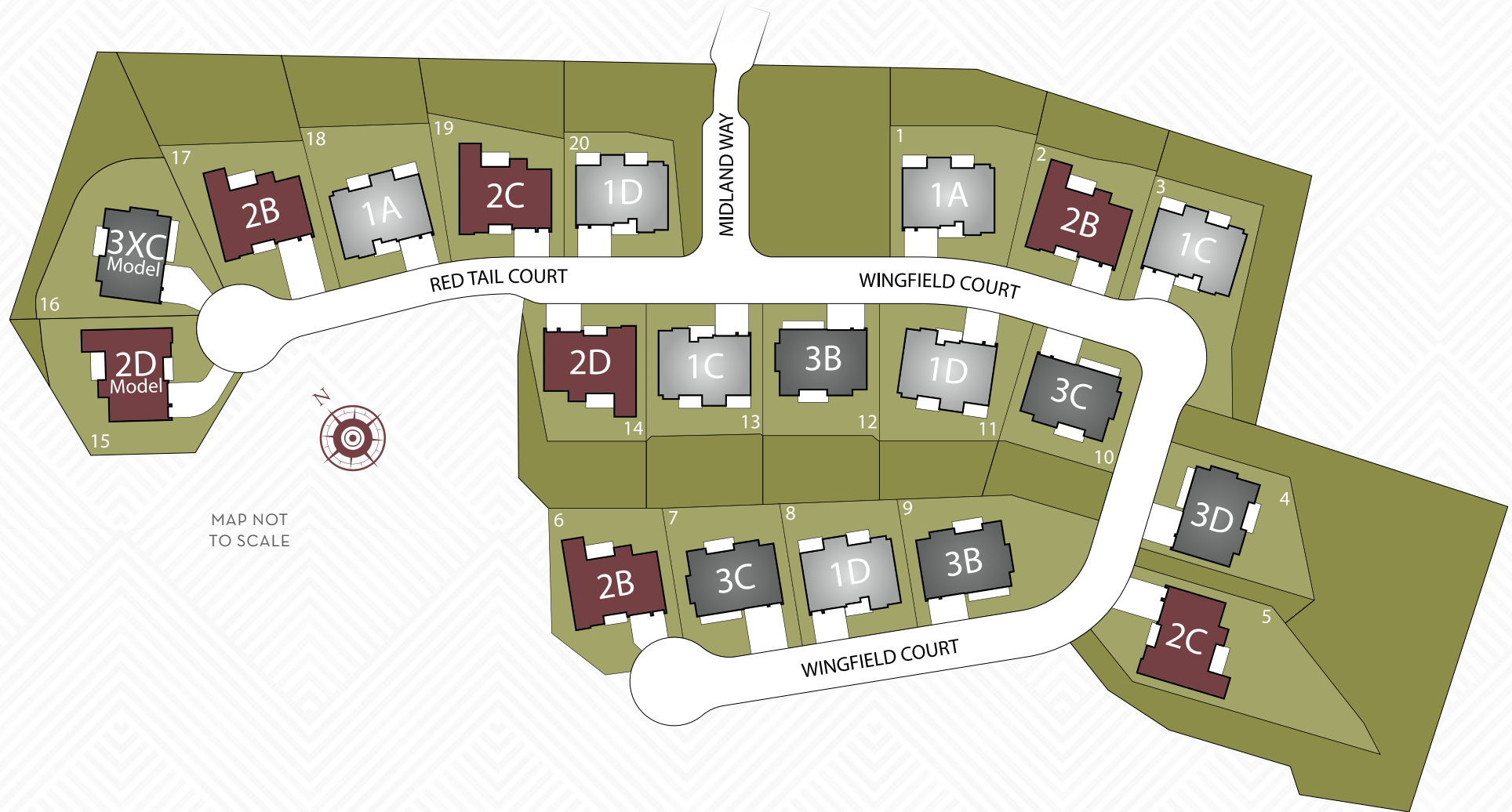
- Beautiful handset 20" x 20" ceramic tile flooring in master bath
- Large walk-in closet with full-length mirrors on closet door
- Generous walk-in shower with quartz surround and 2" x 2" mosaic floor tiles
- Kohler® plumbing fixtures in chrome finish
- Separate water closet for added privacy
- Elegant quartz countertops with dual Kohler® china vanity sinks in master bath
- Rejuvenating Kohler® oval soaking tub with back support
- Kohler® Comfort Height® elongated toilet
- Closet organizer system (white) in master closet to maximize storage
- Classic framed mirrors

## Customizing Opportunities

- Beautiful upgraded countertop materials including granite slab, ceramic tile, quartz, engineered solid surfaces and a wide selection of decorative liners
- Extensive selection of flooring materials in marble, granite, stone, wood, upgraded ceramic tile and carpet
- Stylish stacking glass door system for the ultimate access to outdoor entertaining
- Flex room options including pet spa, hobby room, tech room and mud room (per residence)
- Outdoor fireplace options (per residence)
- Contemporary, linear fireplace options (per residence)
- Upgraded plumbing fixture finishes in kitchen and baths
- Cabinet stain finishes and knobs
- Mirrored wardrobe doors
- Upgraded two-tone paint packages
- Klipsch® home theater surround sound speaker system
- Fire safety package
- Additional electrical
- Lighting packages
- Flat-panel television prep package
- Stylish Woodfold 3 1/2" plantation shutter package
- Efficient upgraded closet organizers to maximize storage
- Wolf® and Sub-Zero® professional appliance package upgrades
- Wolf® and Sub-Zero® warming drawer, built-in refrigerator, beverage center and wine reserve
- Crown molding at select locations (per residence)
- Kohler® whirlpool tub
- Built-in media center, bookshelves and wine storage (per residence)
- Secondary laundry for added convenience (per residence)
- Secondary dishwasher (per residence)
- And so much more!



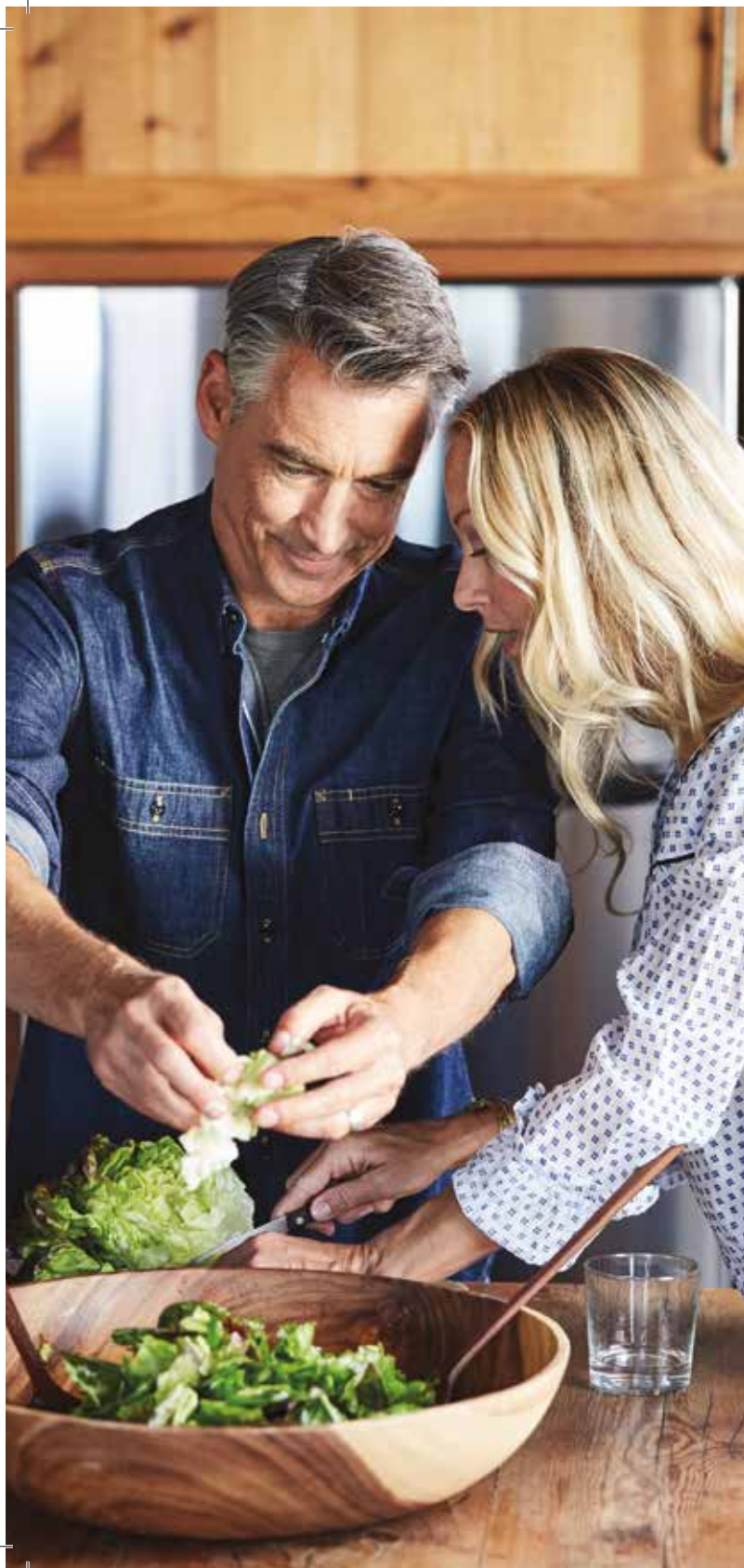
# Site Map



  
RESIDENCE 1

  
RESIDENCE 2

  
RESIDENCE 3






# Red Hawk

BY PONDEROSA HOMES

20 Red Tail Court  
 Danville, CA 94526  
 925.200.4587  
 RedHawkDanville.com  
 PonderosaHomes.com



 Ponderosa Homes reserves the right at its sole discretion to make changes or modifications to prices, floor plans, features, specifications, exterior color schemes, policies, guidelines, dates, literature, maps, materials, homesites released and plans designated on each homesite without notice or obligation. Porches, windows, garages and courtyards (if available) may vary in size and configuration per plan and elevation. Square footages are approximate. All renderings, floor plans and maps are artist's conceptions, are not intended to be an actual depiction of the buildings, fencing, walks, driveways or landscaping and are not to scale. Models do not depict ethnic preference. Ponderosa Homes is a licensed California real estate broker, CalBRE license #01257567.

**PONDEROSA**  
 HOMES